

NOTE:

OFFSET STAKING, IN LOCATIONS WHERE PROPERTY PIN OR BACK OF EASEMENT ARE TOO DIFFICULT TO ESTABLISH/MAINTAIN IS ACCEPTABLE/SUFFICIENT, PROVIDED:

- 1) OFFSET STAKES ARE PROPERLY MARKED WITH THEIR DISTANCE TO ACTUAL LOCATION
- 2) AT LEAST (2) STAKES ARE PRESENT WHICH CLEARLY ESTABLISH THE PARCEL CORNER (OR POINT OF DEFLECTION) LOCATION, AND FROM WHICH BENTON REA CAN PULL, TO STAKE CROSSINGS, CONDUIT STUBS, AND EQUIPMENT LOCATIONS.



WASHINGTON 8 BENTON

WORK ORDER # :
PROJECT:
DSGN BY: SVS
CHK BY:

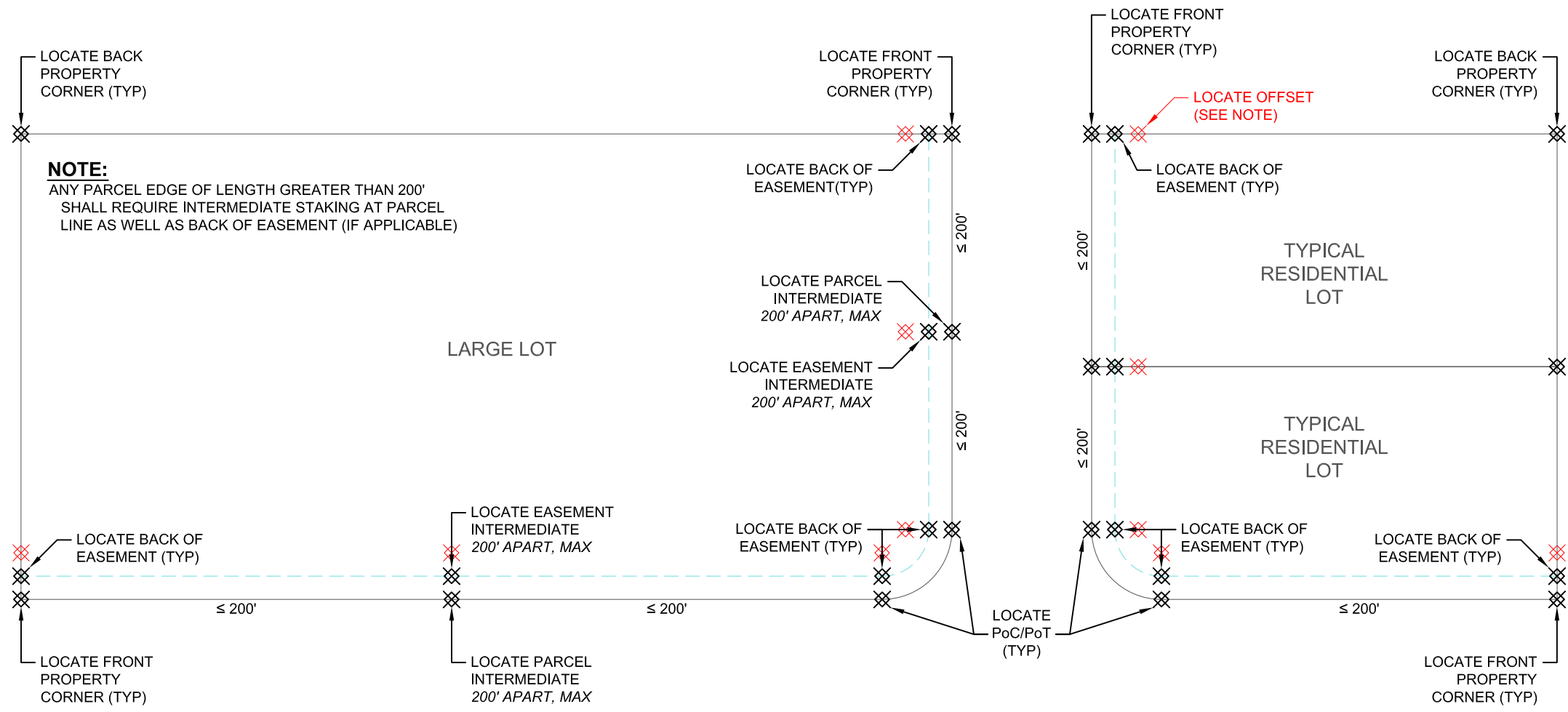
SUBDIVISION SURVEYOR REQ'S
NAME:
LOCATION:

NET LINE FEET (+/-)	WO	JO
TYPE		
PRI OH:		
PRI UG:		
SEC OH:		
SEC UG:		

SHEET # 1 OF 1



FILE:\LOT\ENGINEERING\STAKING\PEER REVIEW\SVS BREA SUBDIVISION\DETAILS 140507.DWG - (08X14) COPYRIGHT © 2011 BENTON REA ALL RIGHTS RESERVED.



NOTE:
ANY PARCEL EDGE OF LENGTH GREATER THAN 200' SHALL REQUIRE INTERMEDIATE STAKING AT PARCEL LINE AS WELL AS BACK OF EASEMENT (IF APPLICABLE)